

- 1
- 2
- 3
- 4
- 5
- 6
- 7
- 8
- 9
- 10
- 11
- 12
- 13
- 14
- 15
- 16
- 17
- 18

MAIN SPECIFICATIONS

- Aluminium
- Epoxy resin coating
- Black, RAL 9005, textured finish **SW**
- Socket cap screws DIN 912
- Stainless Steel AISI 304
- Hex nuts DIN 985
- Stainless Steel AISI 304
- Self-locking via polyamide ring

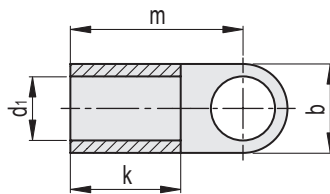
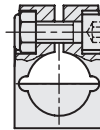
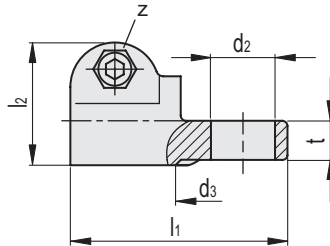
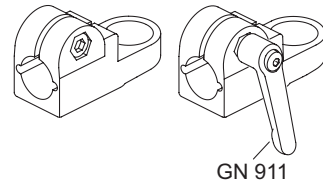
FEATURES AND APPLICATIONS

The clamping bore of the sensor holders GN 275.4 is mechanically machined and designed for construction tubes GN 990 (see page). At the screw location **z**, the socket cap screw reduces the bore cross-section for clamping.

For clamping without tools, the socket cap screw can be replaced by an adjustable lever GN 911 (see page).

ACCESSORY

Adjustable Hand Levers GN 911 (see page).



Conversion Table			
1 mm = 0,039 inch			
d1		d2	
mm	inch	mm	inch
12	0.47	12	0.47
14	0.55	18	0.70
15	0.59		
16	0.62		
18	0.70		

Code	Description	d1	d2	d3	b	k	l1	l2	m	t	z	z Clamping kit	⚖️
GN.59101	GN 275.4-B12-B12-2-SW	B 12	B 12	27	25	31.5	64	34.5	29.5	11	M6-20	GN 911-63	74
GN.59103	GN 275.4-B12-B18-2-SW	B 12	B 18	27	25	31.5	64	34.5	29.5	11	M6-20	GN 911-63	72
GN.59111	GN 275.4-B14-B12-2-SW	B 14	B 12	27	25	31.5	64	34.5	29.5	11	M6-20	GN 911-45 / GN 911-63	70
GN.59113	GN 275.4-B14-B18-2-SW	B 14	B 18	27	25	31.5	64	34.5	29.5	11	M6-20	GN 911-45 / GN 911-63	68
GN.59121	GN 275.4-B15-B12-2-SW	B 15	B 12	27	25	31.5	64	34.5	29.5	11	M6-20	GN 911-45 / GN 911-63	69
GN.59123	GN 275.4-B15-B18-2-SW	B 15	B 18	27	25	31.5	64	34.5	29.5	11	M6-20	GN 911-45 / GN 911-63	67
GN.59131	GN 275.4-B16-B12-2-SW	B 16	B 12	27	25	31.5	64	34.5	29.5	11	M6-20	GN 911-45 / GN 911-63	68
GN.59133	GN 275.4-B16-B18-2-SW	B 16	B 18	27	25	31.5	64	34.5	29.5	11	M6-20	GN 911-45 / GN 911-63	66
GN.59141	GN 275.4-B18-B12-2-SW	B 18	B 12	27	25	31.5	64	34.5	29.5	11	M6-20	GN 911-45 / GN 911-63	64
GN.59143	GN 275.4-B18-B18-2-SW	B 18	B 18	27	25	31.5	64	34.5	29.5	11	M6-20	GN 911-45 / GN 911-63	62

Tube connectors